



HR 500 T

**Solid carbide head reamer
for $\varnothing \geq 20$ mm**

NEW!

EXCLUSIVELINE[®]

Made by Guhring

HR 500 T

With the HR 500 T Guhring now provides solid carbide head reamers from 20 to 36 mm diameter as a special solution.

This special solution expands the successful solid carbide HR 500 version up to 36 mm diameter. Thanks to the short, compact solution the raw material costs remain limited. However, it is possible to take advantage of the universal options of the HR 500 in monoblock design.

Thanks to the universal HA shank the HR 500 T can be flexibly combined with standard chucks and numerous extensions. This considerable advantage makes expensive special holders unnecessary. The reaming operation can be carried out cost-efficiently and of high quality.

Your advantages at a glance:

- flexible holder options thanks to HA shank
- simple extension with shrink fit extension or hydraulic chuck
- design includes universal, cast iron or aluminium options



HR 500 T – versatile combination possibilities

Versatile extension possibilities

For the application with large reaming depths and for easy bridging of protrusions the HR 500 T can be combined with a variety of extensions. With a cost-efficient price-performance ratio, the shrink fit extension (Guhring no. 4719) scores points, for example. Where a slender holder is required and shrink fitting is not possible, Guhring can provide the new hydraulic chuck from clamping \varnothing 10 mm.

NEW!

Hydraulic chuck as special holder from \varnothing 10 mm.



3 coating options

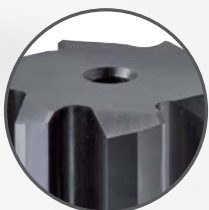
- a** universal option with NanoA-coating for the machining of steel, VA, titanium, super-alloys or hardened steel up to 63 HRC
- Y** cast iron option with Signum-coating for the application in GG and GGG
- Cb** aluminium option with Carbo-coating for the application in aluminium wrought alloys or AISi-cast iron-alloys

Concentricity control point



Shrink fit extension (Guhring no. 4719)

Internal cooling



Blind hole option
with central
coolant exit



Through hole option
with radial
coolant delivery

Flexible combination possibilities

Thanks to the standardised shank to DIN 6535-HA, with short reaming depths HR 500 T can be clamped in conventional hydraulic chucks, shrink fit chucks or other precisely concentric clamping chucks.



Guhring KG

PO Box 10 02 47 · D-72423 Albstadt
Herderstr. 50 - 54 · D-72458 Albstadt
Telephone: +497431 17-0 · www.guehring.de

EXCLUSIVELINE®

Made by Guhring